

**38+**  
KING  
Since 1983

**FALL & WINTER 2022**

**\$40 SAVINGS**

f i y

**KING INDUSTRIAL** **USE WHAT THE PROS USE**

PRICES IN EFFECT UNTIL DECEMBER 31<sup>ST</sup>, 2022

**12" BENCH & 15" FLOOR VARIABLE SPEED DRILL PRESSES**

Mechanical variable speed system  
Digital Readout

**KC-12HS-VS**  
• Powerful 1/2 HP, 5 Amp. motor  
• Variable speeds (580 - 3200 RPM)  
**\$459.99**

**KC-15HS-VS**  
• Powerful 3/4 HP, 8.6 Amp. motor  
• Variable speeds 2 (280 - 1100/ 900-3300) RPM  
**\$699.99**

**6" BENCHTOP JOINTER WITH HELICAL CUTTERHEAD**  
**KC-6HJC**  
**\$425.**

Powerful 1 HP motor  
HELICAL CUTTERHEAD WITH 12 CUTTER INSERTS

- Comes 2 safety push blocks, cutter insert adjustment
- Torx key and adjustment hex. keys
- Cutterhead speed 12,000 RPM

**10" BENCHTOP JOINTER WITH HELICAL CUTTERHEAD**  
**KC-10HJC**  
Powerful 1 HP motor  
HELICAL CUTTERHEAD WITH 22 CUTTER INSERTS  
**\$999.**

Replacement cutter inserts **KW-104** (see p.4)

**8" BENCHTOP JOINTER WITH HELICAL CUTTERHEAD**  
**KC-8HJC**  
**\$625.**

Powerful 1 HP motor  
HELICAL CUTTERHEAD WITH 16 CUTTER INSERTS

**NEW**

**REPLACEMENT HELICAL CUTTER INSERT KIT (10 PCS)**  
**KW-204**  
FITS: KC-6HJC, KC-8HJC & KC-13HPC  
**\$99.99**

**13" PLANER WITH HELICAL CUTTERHEAD**  
**KC-13HPC**

- Powerful 1.5 Amp. motor
- Pre-set depth stops for repeat cuts at 1/8", 1/4", 1/2", 3/4", 1", 1-1/4", 1-1/2" and 1-3/4"

HELICAL CUTTERHEAD WITH 26 CUTTER INSERTS  
**\$699.99**

**12" x 18" VARIABLE SPEED WOOD LATHE**  
**KWL-1218VS**

- Variable speed from 450 - 3,800 RPM
- Comes complete with 3" faceplate, 6" & 12" tool rests with 5/8" post diameter, MT#2 spur centre and MT#2 heavy-duty live centre, safety goggles, knock-out rod, tool storage rack, screwdriver and 4 hex. keys

1 HP high performance DC motor  
**\$699.99**

**1200 CFM DUST COLLECTORS**

- Noise level reading at 36": 66-77dB
- Static pressure (inch of water): 9.5
- Dust port opening: 2 x 4" / 1 x 6"

1 Micron canister filter, offering optimum air flow efficiency

**KC-310SC**  
12 Amp. @ 110V  
6 Amp. @ 220V  
**\$549.**

**KC-310SC/KDCF-3500**  
1 MICRON FELT UPPER BAG  
1 MICRON CANISTER FILTER  
**\$799.**

**93" WOOD CUTTING BANDSAW BLADES**

Model	Length	Width	TPI	Thickness	Price
KBB-1416-14	93"	1/8"	14	.025"	\$22.99
KBB-1414-6	93"	1/4"	6	.025"	\$22.99
KBB-1436-10	93"	3/16"	10	.025"	\$22.99
KBB-1438-6	93"	3/8"	6	.025"	\$22.99
KBB-1412-6	93"	1/2"	6	.025"	\$22.99
KBB-1412-8	93"	1/2"	8	.025"	\$22.99
KBB-1434-4	93"	3/4"	4	.025"	\$22.99

**OPTIONAL BED EXTENSION EXT-1218VS**  
**\$139.99**

Bed extension increases the spindle turning capacity to 44"

**14" WOOD CUTTING BANDSAW WITH RIP FENCE AND RESAW GUIDE**  
**KC-1433FXR**  
\*7.5 Amp. motor

**RIP FENCE SYSTEM WITH RESAW GUIDE**  
**RF-1433R**  
With the purchase of # KC-1433FXR **\$139.99**

**RISER BLOCK KIT**  
**KW-049**  
Comes complete with a 105" blade **\$139.99**

**NEOPRENE WHEEL PROTECTOR FOR 14" WOOD BANDSAWS**  
**KW-094** **\$22.99**

**\*\$1099.99**  
\* After \$40.00 mail-in rebate Sale price  
\$1139.99 Taxes payable on price before rebate

**10" CABINET TABLE SAWS**

- Riving knife system for maximum operator safety
- Comes with 10" x 40 tooth carbide tipped saw blade, cast-iron miter gauge, standard and dado inserts, push stick, storage hooks and hex. keys.

Magnetic safety switch

**2.5 HP (9.6 Amp @ 230V)**

**KC-10KX/U30 30" RIP**  
**\*\$1999.**  
\* After \$40.00 mail-in rebate Sale price  
\$2039.00 Taxes payable on price before rebate

**KC-10KX/U50 50" RIP**  
**\*\$2059.**  
\* After \$40.00 mail-in rebate Sale price  
\$2099.00 Taxes payable on price before rebate

**OPTIONAL OVERARM BLADE COVER SYSTEM WITH DUST COLLECTION**  
**XL-1014**  
**\$549.99**

**OPTIONAL 1 1/2" VACUUM HOSE KIT**  
**KW-161** **\$99.99**

**OPTIONAL MELAMINE EXTENSION TABLE KIT**  
**EXT-5052**  
Fits: KC-10JCS, & KC-26FXT, KC-10KX **\$229.**

**INDUSTRIAL RIP FENCE SYSTEMS**  
**XL-U30 30" RIP** **\$449.**  
**XL-U50 50" RIP** **\$499.**

**HEAVY-DUTY UNIVERSAL MOBILE BASE FOR TABLE SAWS**  
**KMB-1390X**  
900 lbs. Max. **\$279.99**

# TABLE SAWS & ACCESSORIES

## 10" CABINET SAWS

Comes with riving knife, industrial "Tru-Rip" T-square rip fence system for precision cuts, laminated melamine extension table, 2 sturdy adjustable supporting legs for extension table (KC-26FXT/i50/5052 only), cast iron miter gauge with adjustable aluminum fence and flip stop, standard and dado insert

**Powerful 3 HP (220V)**



**TRU-RIP**  
Industrial Rip Fence

## 10" EXTREME CABINET SAW WITH RIVING KNIFE BLADE GUARD SYSTEM INCLUDING ROUTER TABLE AND SLIDING TABLE ATTACHMENTS

- Model KC-26FXT shown here with router table attachment model KRT-100 and sliding table attachment model KST-101
- These router table and sliding table attachments fit most table saws having a 27" deep table

**Powerful 3 HP (220V)**



**KC-26FXT-i30-DELUXE**

**\* \$4999.**

\* After \$40.00 mail-in rebate Sale price \$5039.00 Taxes payable on price before rebate

**KC-26FXT/i30/30 30" RIP**

**\* \$3299.**

\* After \$40.00 mail-in rebate Sale price \$3339.00 Taxes payable on price before rebate

**KC-26FXT/i50/5052 50" RIP**

**\* \$3399.**

\* After \$40.00 mail-in rebate Sale price \$3439.00 Taxes payable on price before rebate

## 12" RADIAL ARM SAW

**KC-12RAS**

(220V, 1 PHASE)

- Powerful 2 HP, 220V single phase motor
- Precision indexing with positive stops at 22.5°, 45° and 90° for accurate bevel cuts
- Two 4" Dust chute for dust collector hook-up
- Includes 12" negative rake blade, blade arbor laser guide attachment, adjustment wrenches and hex. keys



**\$3999.**

**30" INDUSTRIAL RIP FENCE SYSTEM KRF-130**



**\$499.**

**50" INDUSTRIAL RIP FENCE SYSTEM KRF-150**



**\$549.**

**INDUSTRIAL SLIDING TABLE ATTACHMENT KST-101**



**\$1299.**

**INDUSTRIAL ROUTER TABLE AND FENCE ATTACHMENT KRT-100**



**\$899.**

**TENONING JIG K-1500**  
Fits cabinet saws and contractor saws



**\$149.**

## 8" DADO BLADE SET

**KSC-8000**

- Carbide-Tipped 24 tooth ATB-R Dado blades
- Cuts grooves from 1/8" to 13/16" wide
- 5/8" Arbor, 7,000 RPM max.
- Comes with 14 pc. Dado Shim Set, wooden carrying case



**\$119.99**

**KING INDUSTRIAL**

**\$349.99**

## 6-1/2" VARIABLE SPEED PLUNGE CUT TRACK SAW

**KC-8365**

- Powerful 12 Amp, 120V variable speed "soft-start" motor with "constant torque" technology
- Comes with efficient 1L dust management system, dust bag, dust chute, set of carbon brushes and hex. key with on cord storage

This Plunge Cut Track Saw accepts Makita®, Dewalt®, Kreg® or Festool® 6-1/2" x 20mm arbor blades

### OPTIONAL Accessories

**50" Track**

**2 KW-300 \$79.99**

**Storage Bag**

**KW-301 \$29.99**

**Track Connector kit**

**KW-302 \$29.99**

**2 Pc. Clamp Kit**

**KW-303 \$39.99**

## 10" JOBSITE SAW WITH FOLDING STAND

**KC-5100NS**

- Blade tilts 0° to 45°
- Comes with 10" x 40 tooth blade, rip fence, miter gauge, Standard and Dado table inserts, push stick and wrenches

**15 Amp. motor 4400 RPM**



**\$469.99**



# 10" WOOD BANDSAW

## KC-1002C

- Powerful 1 1/2 HP 120V motor
- Table size with extensions 13-3/8" x 13-1/8"
- Dust chute accepts 2", 2-1/2" and 4" dust collector hoses
- Comes complete with miter gauge, rip fence, adjustment wrench and hex. keys



**\$399.99**

67 1/2" WOOD CUTTING BANDSAW BLADES						
Model	Length	Width	TPI	Thickness	Price	
KBB-1018-14	67 1/2"	1/8"	14	.020"	\$22.99	
KBB-1014-6	67 1/2"	1/4"	6	.020"	\$22.99	
KBB-1038-6	67 1/2"	3/8"	6	.020"	\$22.99	
KBB-1012-6	67 1/2"	1/2"	6	.020"	\$22.99	

# WOOD BANDSAWS & ACCESSORIES

## 12" WOOD BANDSAW

### KC-1202FX

- Powerful 3/4 HP 120V motor
- Large 18-7/8" x 15-3/8" tilting table with rack & pinion adjustment
- Circle cutting guide for diameters up to 23-1/2"
- Dust chute accepts 2", 3" and 4" dust collector hoses
- Comes complete with cast aluminum miter gauge, rip fence with 5" high face, push stick, adjustment wrench and hex. keys



**\$799.**

88 3/16" WOOD CUTTING BANDSAW BLADES						
Model	Length	Width	TPI	Thickness	Price	
KBB-1218-14	88 3/16"	1/8"	14	.025"	\$22.99	
KBB-1236-10	88 3/16"	3/16"	10	.025"	\$22.99	
KBB-1214-6	88 3/16"	1/4"	6	.025"	\$22.99	
KBB-1238-6	88 3/16"	3/8"	6	.025"	\$22.99	
KBB-1212-6	88 3/16"	1/2"	6	.025"	\$22.99	

## 14" WOOD BANDSAW

### KC-1402FX

- Powerful 1 HP 120V motor
- Large 21-3/8" x 15-5/8" cast iron tilting table with rack & pinion adjustment
- Dust chute accepts 2", 3" dust collector hoses
- Comes complete with cast aluminum miter gauge, rip fence with 5" high face, push stick, adjustment wrench and hex. keys



Blade tension meter can be seen through conveniently placed window

Quick release lever blade tension system

**\*\$999.99**  
\* After \$40.00 mail-in rebate Sale price \$1039.99 Taxes payable on price before rebate

100 5/8" WOOD CUTTING BANDSAW						
Model	Length	Width	TPI	Thickness	Price	
KBB-1318-14	100 5/8"	1/8"	14	.025"	\$26.99	
KBB-1336-10	100 5/8"	13/16"	10	.025"	\$26.99	
KBB-1314-6	100 5/8"	1/4"	6	.025"	\$26.99	
KBB-1338-6	100 5/8"	3/8"	6	.025"	\$26.99	
KBB-1312-6	100 5/8"	1/2"	6	.025"	\$26.99	
KBB-1334-4	100 5/8"	3/4"	4	.025"	\$26.99	

## 14" WOOD BANDSAW WITH 12" RESAW CAPACITY

### KC-1502FXB

- 2 speeds (2300-3250) SFPM
- Cast-iron table tilts 45° to the right
- Motor, blade, miter gauge and precision "TRU-RIP" aluminum rip fence with resaw guide included

### 20" x 16" cast iron table

12.8 Amp. @ 110V - 6.2 Amp. @ 220V  
Pre-wired to 110V



**\$2299.**

Hydraulic blade tension gauge  
220VOLT CONVERSION KIT  
KW-220-1502  
For: KC-1502FXB  
**\$99.99**

2- 4" dust chutes

Safety foot brake

112" WOOD CUTTING BANDSAW BLADES						
Model	Length	Width	TPI	Thickness	Price	
KBB-1514-6	112"	1/4"	6	.025"	\$22.99	
KBB-1538-6	112"	3/8"	6	.025"	\$22.99	
KBB-1512-4	112"	1/2"	4	.025"	\$22.99	
KBB-1534-3	112"	3/4"	3	.025"	\$22.99	
KBB-1510-2	112"	1"	2	.032"	\$29.99	

## 17" WOOD BANDSAW

### KC-1702FXB

- 2 speeds (1600/3300) SFPM
- Rack and pinion height adjustment system
- Cast-iron table tilts 10° to the left & 45° to the right
- Miter gauge system

### 17" x 17" cast iron table

14Amp. @ 110V - 7 Amp. @ 220V  
Pre-wired to 110V



**\$2399.**

New improved upper & lower blade guide system

TRU-RIP RESAW FENCE SYSTEM

2- 4" dust chutes

131 5/8" WOOD CUTTING BANDSAW BLADES						
Model	Length	Width	TPI	Thickness	Price	
KBB-1714-6	131 5/8"	1/4"	6	.025"	\$28.99	
KBB-1738-6	131 5/8"	3/8"	6	.025"	\$28.99	
KBB-1712-4	131 5/8"	1/2"	4	.025"	\$28.99	
KBB-1734-3	131 5/8"	3/4"	3	.025"	\$29.99	
KBB-1710-2	131 5/8"	1"	2	.032"	\$29.99	

## 21" WOOD BANDSAW

### KC-2102FXB

- 2 speeds (1890/3800) SFPM
- Cast-iron table tilts 10° to the left & 45° to the right
- Rack and pinion height adjustment system
- Miter gauge system

### 21" x 21" cast iron table

16Amp. @ 110V - 8 Amp. @ 220V  
Pre-wired to 220V



**\$2999.**

New improved upper & lower blade guide system

TRU-RIP RESAW FENCE SYSTEM

2- 4" dust chutes

152 1/8" WOOD CUTTING BANDSAW BLADES						
Model	Length	Width	TPI	Thickness	Price	
KBB-2114-6	152 1/8"	1/4"	6	.025"	\$29.99	
KBB-2138-6	152 1/8"	3/8"	6	.025"	\$29.99	
KBB-2112-4	152 1/8"	1/2"	4	.025"	\$29.99	
KBB-2134-3	152 1/8"	3/4"	3	.032"	\$39.99	
KBB-2110-2	152 1/8"	1"	2	.032"	\$39.99	

## 17" VARIABLE SPEED WOOD & METAL CUTTING BANDSAW

### KC-1700WM-VS

- Variable speeds (wood): 540-3600 SFPM
- Variable speeds (metal): 100-650 SFPM
- Voltage (input power): 220V, 1 phase, 60 Hz
- Cast-iron table tilts 5° to the left & 45° to the right

### 23 1/2" x 17" cast iron table

2 HP 7 Amp. @ 220V



**\$4699.**

Blade speed digital readout

TRU-RIP RESAW FENCE SYSTEM

2- 4" dust chutes

Comes with: a 1/2" x 6 TPI wood cutting blade, 1/2" x 10 TPI metal cutting blade, laser guide, work lamp, miter gauge and a precision "TRU-RIP"

# 13" PLANER / MOULDER

## KC-235PM

- Powerful 1.5 HP motor
- Double drive belt system
- 6 1/8" max. planing / moulding thickness



**10 PC. MOULDING KNIFE SET**  
**K-4509K**  
 ALSO AVAILABLE:  
 20 INDIVIDUAL MOULDING KNIFE SETS

**\$279.**

### H.S.S. PLANER KNIVES

<b>13"</b> KCC-13PM Fits: KC-235PM <b>\$89.99</b>	<b>15"</b> KCC-15 <b>\$99.99</b>	<b>20"</b> KCC-20 <b>\$159.99</b>
--	--	---



**\$1999.**

# PLANERS WITH SPIRAL CUTTERHEADS

## 15" PLANER WITH SPIRAL CUTTERHEAD

### KC-390FX

- Powerful 3 HP motor (220V motor)
- A spiral cutterhead is 50% quieter than a conventional cutterhead
- Anti-kickback fingers in front of the infeed roller to prevent wood kickback
- Magnetic safety switch
- Comes complete with cabinet stand and 4" dust collector outlet



**4 Row spiral cutterhead with 74 replaceable cutter inserts**



**\$3399.**

## 20" PLANER WITH SPIRAL CUTTERHEAD

### KC-526FX

- Powerful 5 HP motor (220V motor)
- A spiral cutterhead is 50% quieter than a conventional cutterhead
- Anti-kickback fingers in front of the infeed roller prevents wood kickback
- Magnetic safety switch
- Comes with knife setting gauge and 5" dust chute



**4 Row spiral cutterhead with 98 replaceable cutter inserts**



**\$4999.**

## PLANERS



## 15" PLANER

### KC-382CFX

- 3 HP motor
- 6" max planing thickness
- Includes cabinet stand, planing knife, setting gauge and 4" dust collector outlet

**\$1949.**



## 15" PLANER

### KC-385FX

- 3 HP motor
- 8" max planing thickness
- Includes cabinet stand, planing knives, knife setting gauge and 4" dust collector outlet

**\* \$2099.**

\* After \$40.00 mail-in rebate  
 Sale price \$2139.00 Taxes payable on price before rebate

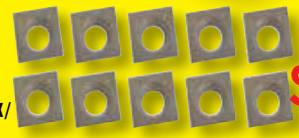
## CARBIDE CUTTER INSERT KITS

### KW-140

- Carbide inserts cut on all 4 sides
- Cutter size: 14mm x 14mm x 2mm
- Fits KC-526FX / KC-530FX / KC-630FX-2/ KC-630FX-6

### KW-104

- Carbide inserts cut on all 4 sides
- Cutter size: 15mm x 15mm x 2.5mm
- Fits KC-10HJC / KC-525FX / KC-530FXR / KC-12HJPC



**\$109. EA.**



## 20" HEAVY-DUTY PLANER

### KC-520C

- Powerful 5 HP (220V motor)
- Cuts per inch: 104-83
- Feed rate: (16-20 FPM)
- 8" max. planing thickness
- Magnetic safety switch

**\$3399.**

## EXTENDABLE & FLEXIBLE CONVEYOR ROLLER TABLE

### KRRS-109



- Extends from 19" to 52"
- Raises from 24" to 45"
- 300 lbs. max. capacity

**\$369.99**

4

## FOLDING ROLLER STAND

### KRS-102

- Stand height is adjustable from 27" to 44"



**\$29.99**

## 3 in 1 FOLDING ROLLER STAND

### KRS-108

- Stand height is adjustable from 27" to 44"



**\$39.99**

# JOINTERS

**6" JOINTER**  
**KC-61FX**  
 • Powerful 1 HP motor  
 • 6 3/4" x 46" table size  
 • 29" x 5" fence size



**6" JOINTER WITH SPIRAL CUTTERHEAD**  
**KC-65FX**  
 • Powerful 1 HP motor  
 • A spiral cutterhead makes 50% less noise

4 Row spiral cutterhead with 26 replaceable cutter inserts



**\$999.**

**\$1599.**

**6" PARALLELOGRAM JOINTER**  
**KC-70FX**  
 • Powerful 2 HP motor  
 • 6" x 55 1/2" table size  
 • 36" x 5" fence size



**6" PARALLELOGRAM JOINTER WITH SPIRAL CUTTERHEAD**  
**KC-75FX**  
 • Powerful 2 HP motor  
 • A spiral cutterhead makes 50% less noise

4 Row spiral cutterhead with 32 replaceable cutter inserts



**\$1299.**

**\$1899.**

**MAGNETIC & MICRO ADJUSTABLE KNIFE JIG ALIGNMENT KIT**  
**KKC-50**  
**\$79.99**



**KNIFE JIG ALIGNMENT KIT**  
**KKC-60**  
**\$49.99**  
 For Jointers



**EXTENDABLE UNIVERSAL MOBILE BASE**  
**KMB-1250**  
**\$69.99**  
 500 lbs. Max.



**INDUSTRIAL MOBILE BASE**  
**KMB-1290**  
**\$129.99**  
 900 lbs. Max.



**8" INDUSTRIAL JOINTER**  
**KC-203C**

• Powerful 2 HP motor  
 • 9" x 73" table size  
 • 35" x 5" fence size



**\$1699.**

**8" PARALLELOGRAM JOINTER**  
**KC-80FX**  
 • Powerful 2 HP motor  
 • 8" x 76 1/2" table size  
 • 36" x 5" fence size



**8" PARALLELOGRAM JOINTER WITH SPIRAL CUTTERHEAD**  
**KC-85FX**  
 • Powerful 2 HP motor  
 • A spiral cutterhead makes 50% less noise

4 Row spiral cutterhead with 36 replaceable cutter inserts



**\$1899.**

**\$2499.**

**H.S.S. & CARBIDE JOINTERS KNIVES**

Model	Blade Material	Size	Unit / Kits	Price
KKC-6	H.S.S.	6"	3	\$39.99
KKC-8	H.S.S.	8"	3	\$59.99
KKC-120	H.S.S.	12"	3	\$99.99
KKC-6-CB	Carbide	6"	3	\$219.99
KKC-8-CB	Carbide	8"	3	\$259.99

**12" PARALLELOGRAM JOINTER**  
**KC-120FX** (220V, 1phase, 60Hz)  
**KC-120FX-5** (550V, 3 phase, 60Hz)  
 • Powerful 3 HP motor  
 • 84" x 13" table size  
 • 36" x 5" fence size

**12" PARALLELOGRAM JOINTER WITH SPIRAL CUTTERHEAD**  
**KC-125FX** (220V, 1phase, 60Hz)  
**KC-125FX-5** (550V, 3 phase, 60Hz)  
 • Powerful 3 HP motor  
 • Easy set-up (Carbide cutter inserts)  
 • A spiral cutterhead makes 50% less noise



**\$3999.**

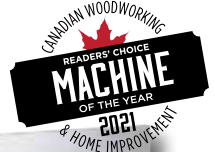
**\$4599.**

4 Row spiral cutterhead with 52 replaceable cutter inserts



**12" INDUSTRIAL JOINTER/PLANER WITH SPIRAL CUTTERHEAD**  
**KC-12HJPC**  
**COMBO**

• Powerful 3 HP motor  
 • A spiral cutterhead makes 50% less noise  
 • Large 43" x 6" aluminum extruded fence pivots 0-45°  
 • Comes with 2 push blocks, set of 5 replacement cutter inserts, 2 T25 Torx screwdrivers and adjustment hex. keys



Shown here in planer mode

5 Row spiral cutterhead with 60 replaceable cutter inserts



**\$4499.**

# OSCILLATING SPINDLE SANDERS & ACCESSORIES

## OSCILLATING SPINDLE SANDER

### KC-OVS-TL

- Table can be tilted downwards up to a maximum of 45° to allow the sanding of beveled parts
- Comes standard with 3 spindles (1/4", 1/2" and 5/8") and 2 drums (1-1/2" and 2")

**\$799.**



## SLEEVE KITS

5 9/16" - 1/4" to 2"

Model	Sleeve Size	Grit	Units/Kits	Price
SI-514-K-80	5/9/16" x 1/4"	80	2	\$7.99
SI-514-K-120	5/9/16" x 1/4"	120	2	\$7.99
SI-512-K-80	5/9/16" x 1/2"	80	2	\$7.99
SI-512-K-120	5/9/16" x 1/2"	120	2	\$7.99
SI-524-K-80	5/9/16" x 3/4"	80	2	\$7.99
SI-524-K-120	5/9/16" x 3/4"	120	2	\$7.99
SI-515-K-80	5/9/16" x 1 1/2"	80	2	\$7.99
SI-515-K-120	5/9/16" x 1 1/2"	120	2	\$7.99
SI-520-K-80	5/9/16" x 2"	80	2	\$7.99
SI-520-K-120	5/9/16" x 2"	120	2	\$7.99

**OPTIONAL STAND**  
SS-OVS-TL  
**\$149.**



## SLEEVE KITS

5" x 1/4" to 9" x 4"

Model	Sleeve Size	Grit	Unit/Kit	Price
SI-525-80	5" x 1/4"	80	1	\$5.99
SI-525-120	5" x 1/4"	120	1	\$5.99
SI-638-80	6" x 3/8"	80	1	\$5.99
SI-638-120	6" x 3/8"	120	1	\$5.99
SI-612-80	6" x 1/2"	80	1	\$5.99
SI-612-120	6" x 1/2"	120	1	\$5.99
SI-658-80	6" x 5/8"	80	1	\$5.99
SI-658-120	6" x 5/8"	120	1	\$5.99
SI-934-80	6" x 3/4"	80	1	\$5.99
SI-934-120	6" x 3/4"	120	1	\$5.99
SI-910-80	9" x 1"	80	1	\$5.99
SI-910-120	9" x 1"	120	1	\$5.99
SI-915-80	9" x 1 1/2"	80	1	\$5.99
SI-915-120	9" x 1 1/2"	120	1	\$5.99
SI-920-80	9" x 2"	80	1	\$6.99
SI-920-120	9" x 2"	120	1	\$6.99
SI-930-80	9" x 3"	80	1	\$8.99
SI-930-120	9" x 3"	120	1	\$8.99
SI-940-80	9" x 4"	80	1	\$9.99
SI-940-120	9" x 4"	120	1	\$9.99

## OSCILLATING SPINDLE SANDER

24 1/4" x 24 1/4" cast iron tilting table

### KC-OVS-FX3

- 1" to 4" rubber drums can be fitted on both ends for full use of the entire spindle
- 4" Dust chute for dust collector hook-up
- Heavy-duty oil bath gearbox with oil level sight gauge
- 10 interchangeable spindles (1/4" x 5", 3/8" x 6", 1/2" x 6", 5/8" x 6", 3/4" x 9", 1" x 9", 1 1/2" x 9", 2" x 9", 3" x 9" and 4" x 9")
- Includes 3 interchangeable table inserts and adjustment keys

**\$2299.**



## MAGNETIC SWITCHES

Comes with twist lock emergency stop button

KMAG-110-811	110V (8-11 Amp.)
KMAG-110-1114	110V (11-14 Amp.)
KMAG-110-1417	110V (14-17 Amp.)
KMAG-220-811	220V (8-11 Amp.)
KMAG-220-1114	220V (11-14 Amp.)
KMAG-220-1417	220V (14-17 Amp.)
KMAG-220-1721	220V (17-21 Amp.)



Comes with padlock and keys to prevent unauthorized use

**\$119.99 ea.**

## 6" X 48" BELT & 12" DISC SANDERS

### KC-790FX

**\$1899.**

### KC-790FX-DC WITH BUILT-IN DUST COLLECTOR

**\$1999.**



- Powerful 1.5 HP, 110V/220V motor
- 4" dust chute for dust collector hook-up (KC-790FX only)
- Comes with aluminum miter gauge, cast-iron work stop, T-slot centre point, enclosed stand and adjustment hex. keys

## 6" x 48" BELT & 9" DISC SANDER

### KC-760L

- Two 2-1/2" dust chutes with 2-1/2" to 4" adaptor for dust collector hook-up
- Comes complete with miter gauge, 2-1/2" to 4" dust chute adaptor and sturdy enclosed cabinet stand

1 HP Motor

**\$559.99**



### 9" STICK-ON ADHESIVE DISC KITS

Model	Disc size	Grit	Units/Kits	Price
SD-9-K-60	9"	60	3	\$7.99
SD-9-K-80	9"	80	3	\$7.99
SD-9-K-100	9"	100	3	\$7.99
SD-9-K-120	9"	120	3	\$7.99

### 6" x 48" SANDING BELT KITS

Model	Belt Size	Grit	Units/Kits	Price
SB-648-K-60	6" x 48"	60	2	\$12.99
SB-648-K-80	6" x 48"	80	2	\$12.99
SB-648-K-100	6" x 48"	100	2	\$12.99
SB-648-K-120	6" x 48"	120	2	\$12.99

## ABRASIVE CLEANER

### K-1306

1 1/2" x 1 1/2" x 8



**\$17.99**

## 12" DOVETAIL JIG

### K-2796

- Handles materials from 5/16" to 1 1/4" thick, and widths up to 12"
- Unit includes 1/2" aluminum template



**\$119.99**

## Dust Collector Bag

KDCB-790

**\$39.99**



# OSCILLATING EDGE SANDERS

## & ACCESSORIES

### 6" x 89" OSCILLATING EDGE SANDER

#### KC-689-OSC-7

- Quick belt release lever
- Comes with miter gauge, table guide and end table
- 4" Dust chute

**\$1999.**



#### 6" x 89" SANDING BELTS

Model	Belt Size	Grit	Unit	Price
SB-689-60	6" x 89"	60	1	\$19.99
SB-689-80	6" x 89"	80	1	\$19.99
SB-689-100	6" x 89"	100	1	\$19.99
SB-689-120	6" x 89"	120	1	\$19.99

End table allows curved sanding operations



### 6" x 108" EDGE SANDER

#### CT-108C

- 2 HP motor
- Table size:  
Front 37" x 7 3/4",  
Side 19" x 12"
- 4" Dust chute

**\$2999.**



#### 6" x 108" SANDING BELTS

Model	Belt Size	Grit	Unit	Price
SB-6108-60	6" x 108"	60	1	\$19.99
SB-6108-80	6" x 108"	80	1	\$19.99
SB-6108-100	6" x 108"	100	1	\$19.99
SB-6108-120	6" x 108"	120	1	\$19.99

Easy and convenient belt tension and tracking adjustment



### 6" x 108" OSCILLATING EDGE SANDER

#### KC-108-OSC

- Powerful 2 HP motor
- Balanced 7" rubber drive wheel and 3" crown idler wheel

**\$3299.**



Easy and convenient belt tension and tracking adjustment



# 10" WET/DRY SHARPENER KIT

#### KC-4900S

Heavy-duty 1.6 Amp. motor quietly rotates at 115 RPM for maximum precision during sharpening

**\$229.99**

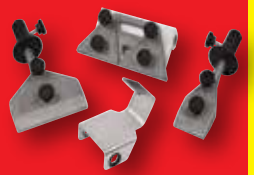


#### OPTIONAL 4 PC. ACCESSORY KIT

#### KM-130

(Short knife jig, long knife jig, scissors jig & axe jig)

**\$69.99**



### 16" OPEN DRUM SANDER

#### KC-1632DS

- 10 Amp. motor
- Drum speed: 1,720 RPM
- 2 1/2" dust chute
- Easy clamping sanding belt loading system

**\$1699.**



With its open ended design this machine can sand a **32"** wide piece in 2 passes

Infeed and outfeed tables can be folded down



Metric or imperial digital depth gauge for increased thickness accuracy



### 22" OPEN DRUM SANDER

#### KC-2244DS

- Powerful 1.75 HP motor
- 22" x 5" aluminum sanding drum

**\$2299.**



With its open ended design this machine can sand a **44"** wide piece in 2 passes

### 26" X 12" DUAL DRUM SANDER

#### KC-26DS

- 3 HP (220V) motor
- 2 speeds (3-20 SFPM)
- Twin 4" dust chutes
- Magnetic safety switch
- Variable feed speed

**\$3799.**

Two 5" aluminum sanding drums are precision balanced and driven by 2 V-belts



#### 5" x 120" SANDING BELTS

Model	Belt Size	Grit	Unit	Price
SB-5120-80	5" x 120"	80	1	\$19.99
SB-5120-120	5" x 120"	120	1	\$19.99
SB-5120-150	5" x 120"	150	1	\$19.99
SB-5120-180	5" x 120"	180	1	\$19.99



26" X 12" THICKNESS CAPACITY

## NOVA G3 WOOD LATHE CHUCK ANNIVERSARY BUNDLE

nova 63 ANNIVERSARY BUNDLE ANNIVERSAIRE

- 48260**
- 3-3/8" 4 jaw chuck
  - 1" x 8 TPI
  - 20, 50 & 100mm and Mini Cole jaw sets
  - No chuck insert required
  - Fits: KWL-1016C, KWL-1218VS, KWL-1443VS



**\$269.99**

## G3 REVERSIBLE CHUCK KIT (3-1/2")

nova 63

- 48232C**  
Direct Threaded 1" x 8TPI RH/LH.  
KIT INCLUDES:  
G3 Reversible Chuck, 50mm/2" Jaws, T-bar chuck key, Woodworm screw and fastenings



**\$149.99**

## G3 PEN TURNING CHUCK BUNDLE KIT (3-1/2")

nova 63

- 48265C**  
Direct Threaded 1" x 8TPI RH/LH.  
KITS INCLUDES:  
G3 Reversible Chuck, 50mm/2" Jaws, Pen Plus Jaws, Mandrel Saver, T-bar chuck key, Woodworm screw and fastenings



**\$219.99**

## 4 JAW /4" WOOD LATHE CHUCK

- KW-100**  
Fits models :KWL-1016C, KWL-1218VS & KWL-1443VS  
1" x 8 FPP



**\$129.99**

## 1-1/4" x 8 TPI WOOD LATHE CHUCK ADAPTOR

- KW-200**  
• Allows a 1" x 8 TPI wood lathe chuck to be installed on a 1-1/4" x 8 TPI wood lathe spindle  
• Fits KWL-1643ABC



**\$37.**

## 8 PC. WOOD LATHE CHISEL SET

- KPRO-08**  
Long 10" hard wood handles



**\$79.99**

## UNIVERSAL STAND & EXTENSION FOR WOOD LATHES

### SS-EXT-101

- Leveling feet for stability on uneven floors
- Made of sturdy tubular steel
- Adjustable upper supports with 1" increments
- **Optional stand extension** (mod. SS-EXT-101) provides support for wood lathes fitted with bed extensions

SS-KWL-100 & SS-EXT-101 shown here with KWL-1218VS and EXT-1218VS installed.



**\$89.99**

### SS-KWL-100

- Leveling feet for stability on uneven floors
- Made of sturdy tubular steel
- Adjustable upper supports with 1" increments



**Stand only Fits:**  
KWL-1016C, KWL-1218VS

SS-KWL-100 shown here with KWL-1016C installed.

**\$179.99**

**KING INDUSTRIAL**

# WOOD LATHES & ACCESSORIES

## 8" x 13" VARIABLE SPEED WOOD LATHE

### KWL-813VS

- 1/3 HP (300 Watt) DC motor
- Variable speed range of 750 to 3200 RPM
- 8" inboard swing for bowl turning
- Complete with 4-1/4" and 7" tool rests with 1/2" post diameter, 5-3/4" faceplate, MT#1 live center, MT#1 spur center, steel knock-out bar, adjustment keys and hex. keys

**\$315.**



## 10" x 16" WOOD LATHE

### KWL-1016C

- 6 speeds (480, 1270, 1960, 2730, 3327, 4023) RPM
- Complete with MT#2 live center, MT#2 spur center, 3" faceplate, steel knock-out bar, hex. keys and safety glasses

**\$499.99**



## OPTIONAL BED EXTENSION

- EXT-1016**  
Increases the spindle turning capacity to 38"



**\$139.99**

## 14" X 43" VARIABLE SPEED WOOD LATHE WITH DIGITAL READOUT

### KWL-1443VS

**Pivoting headstock turns 180° and locks into position for outboard turning**



- Spindle tachometer with digital readout
- Variable speed from 600 - 2,400 RPM
- Pivoting headstock turns 180°
- Quick release headstock, tailstock and tool rest assembly for easy adjustments
- Comes complete with 6" face plate, 12" tool rest with offset base, MT#2 headstock and tailstock centres and adjustment wrenches

**\$1099.99**



# POWER FEEDERS

## KPF-30V

- 1 3/16" roller width
- 3 1/8" roller diameter

**1.2 AMP. MOTOR  
VARIABLE SPEED**



**\$699.99**

## KPF-32

- 3 1/8" roller diameter
- 1 3/16" roller width

**2.5 AMP. MOTOR**



**\$1199.**

## KPF-34

- 4 3/4" roller diameter
- 2 1/4" roller width

**6.2 AMP. MOTOR (220V)**



**\$1599.**

# HOLLOW CHISEL MORTISERS

## 5/8" HOLLOW CHISEL MORTISER WITH TILTING HEAD

### MA-1050ST

- Powerful 3/4 HP motor
- Includes sleeve adaptors which accept 5/8" and 3/4" diameter chisel shanks
- Comes complete with mortising chisel and bit set (1/4", 5/16", 3/8" & 1/2"), 1/2" chuck and key, column mounted hold down, pair of 9 position table hold downs and quick release vise

**HEAD TILTS FROM 0° TO 30° TO THE RIGHT AND LEFT**

**\$749.**



### OPTIONAL STAND SS-1050ST

**\$159.**

## 1" HOLLOW CHISEL MORTISER WITH TILTING HEAD

### MA-1075ST

- Powerful 1 HP 110V/220V dual voltage motor
- 1/4" to 1" chisel and bit capacity
- Large longitudinal and transversal 19" x 12-1/2" sliding table reclamping of the workpiece
- Includes chisel adaptor bushings which accept 5/8" and 3/4" diameter chisel shanks
- Comes complete with mortising chisel and bit set (1/4", 3/8", 1/2" & 3/4"), chisel adaptor bushings, 1/2" chuck and key

**HEAD TILTS FROM 0° TO 30° TO THE RIGHT AND LEFT**

### OPTIONAL STAND SS-1075ST

**\$499.**



**\$2499.**

# INDUSTRIAL WOODWORKING SHAPER

**Powerful  
3 HP motor**

## KC-351S

- Spindle travels a full 3"
- Spindle speeds, 8,000 & 10,000 RPM
- Comes complete with 1/2" & 3/4" interchangeable spindles, 1/4" & 1/2" router bit adaptors and a miter gauge



**\$2199.**



## 3/4" UNIVERSAL SHAPER CUTTERHEAD WITH 13 INTERCHANGEABLE PROFILE CUTTERS

### KW-091

**\$259.99**



## 13-SPINDLE LINE BORING MACHINE

### KC-1300BM

- Powerful 1.5 HP 110V motor
- Designed for simultaneous multi-hole line boring or drilling, ideal for cabinet makers or shelving applications
- 13 spindles spaced 1-1/4" on centre, allowing drilling up to 13 evenly spaced holes
- Fully adjustable aluminum fence with work stops at each end to line up workpiece from the right or left to perform parallel boring patterns
- Indexing pins allow correct spindle alignment for resuming line boring operations in long workpieces

**Large  
31-1/2" x 15-3/4"  
melamine table top**



**\$2999.**

## BLUM® HINGE BORING HEAD ATTACHMENT

### KW-162

- Blum style 45mm-9.5mm three-hole pattern
- 3 spindle heads (rotation-2 left/1 right)
- Can be used with or without the 8mm boring bits
- Comes with 35mm hinge bring bit, 8mm boring bits (1 left/1 right), link-bar and adjustment wrench

**\$849.**



**ADJUSTABLE  
HEIGHT  
STOP AND  
DEPTH STOP**



**ADJUSTABLE  
FENCE WORK  
STOPS AND  
EXTENSION  
WORK STOPS**

## REMOTE POWER CONTROL SYSTEM

**RC-110**

(110V)

- 120° INFRARED RAY RECEIVING ANGLE
- INCLUDES MOUNTING HARDWARE AND 2 AAA BATTERIES



**\$139.99**

## DUST COLLECTORS & ACCESSORIES

### 700 CFM

**KC-2405C**

- Washable 1 micron upper felt dust bag for optimal air flow efficiency and reusable clear plastic lower dust bags (3)
- 4" diameter inlet port

1 Micron felt upper bag



**\$479.**

### 1200 CFM

**KC-3109C**

- 2 HP (220V) motor
- Improved metal impellers for maximum air flow performance
- Comes with wheel castors for portability



**\$779.**

### 600 CFM

**KC-1105C**

- 1 HP motor
- Heavy duty bag
- Comes complete with 10' hose, dust hood, dust hood support and wheel castors for portability



**\$325.**

### CLEAR FLEXIBLE COLLAPSIBLE PVC HOSE

4" Lin. Ft. **K-1033-50**

**\$3.99**



PVC HOSE 4" Lin. Ft. **K-1034-50**

**\$3.99**



5" Lin. Ft. **K-1035-50**  
**\$5.49**

4" ALUMINUM BLAST GATE **K-1142**

**\$23.99**



4" BLAST GATE **K-1007**

**\$11.99**



4" T-FITTING **K-1013**

**\$11.99**



4" Y-FITTING **K-1015**

**\$11.99**



4" ELBOW **K-1017**

**\$11.99**



4" SPLICE **K-1019**

**\$11.99**



1"- 6" UNIVERSAL ADAPTOR **K-1039**

**\$11.99**



WIRE HOSE CLAMPS 4"-K-1317

**\$2.79**



5"-K-1318  
**\$2.99**



DUST COLLECTION SEPARATOR with ELBOW **K-1056/ K-1017**

To maximize the cyclonic air flow in the drum

**\$59.99**



### 1 MICRON CANISTER FILTER FOR 1.5, 2 & 3 HP DUST COLLECTORS

**KDCF-3500**

Designed to fit KING dust collectors KC-3105C, KC-3108C, KC-3109C, KC-4043C, KC-4045C and other similar dust collectors. Dimension: 19-3/4" to 20-1/4" I.D. x 25" high

**\$399.99**



### DUST COLLECTION HOSE KIT #1

**K-1054**

- KIT Includes:**
- 4" X 10 ft. Wood Dust Collection Hose
  - 4" Universal Dust Hood
  - 2 x 4" Wire Hose Clamps

**\$45.**



### DUST COLLECTION HOSE KIT #2

**K-1055**

- KIT Includes:**
- 2 x 4" blast gates
  - 4" table saw dust hood
  - 4" universal dust hood
  - 4" Y-fitting
  - 10 x 4" wire hose clamps
  - 2 x 4" X 10 ft. wood dust collection hoses

**\$109.99**



### 2280 CFM

**KC-4045C**

- 3 HP (220V) motor
- Improved metal impellers are precision balanced and designed for maximum air flow performance
- 4" diameter dust ports accept accessory hoses for attaching up to 3 machines
- Comes with wheel castors for portability



**\$999.**

### 3980 CFM

**KC-5043FX-2**

5 HP (220V)

**KC-5043FX-6**

5 HP (600V)

- Improved metal impellers are precision balanced and designed for maximum air flow performance
- 4" diameter dust ports accept accessory hoses for attaching up to 4 machines
- Comes with wheel castors for portability



**\$2999.**

TOTAL HEIGHT 11 FT.

### 4" DUST COLLECTION HOOK-UP SYSTEM

27 PC



Ideal for connecting two machines to a dust collector

**KW-270**

- 27 pc Kit includes:
- 4 pc- 4" x 36" Clear tubes
  - 1 pc- 4" x 7" Clear tube
  - 2 pc- 4" 45 degree elbows
  - 2 pc- 4" 90 degree elbows
  - 7 pc- 4" adaptor fittings
  - 2 pc- 4" Blast gates
  - 1 pc- 4" Y-fitting
  - 8 pc- retaining Brackets (including 16 screws and 16 wall plugs)

**\$175.**



1 MICRON FELT UPPER BAG **KDCF-3108T-1MIC**

**\$69.99**

Fits: KC-3105C, KC-3108C & KC-3109C

CLOTH BOTTOM DUST BAG **KDCF-3105B**

**\$49.99**

Fits KC-3105C

SEE THROUGH PLASTIC BOTTOM DUST BAG **KDCF-5**

**\$29.99**

5 BAGS PER BOX

# DUST COLLECTORS WITH 1 MICRON CANISTER FILTERS

## 700 CFM DUST COLLECTOR WITH CANISTER FILTER

**KC-2405C/KDCF-2400**

- Noise level reading at 36": 75-85 dB
- Static pressure (inch of water): 6.1
- Dust port opening: 4"

**1 HP**  
7 Amp. @ 120V



**\$679.99**

## 1200 CFM DUST COLLECTOR WITH CANISTER FILTER

**KC-3109C/KDCF-3500**

- Noise level reading at 36": 66-77 dB
- Static pressure (inch of water): 9.5
- Dust port opening: 2 x 4" / 1 x 6"

**2 HP**  
9 Amp. @ 220V



**\$999.**

## 2280 CFM DUST COLLECTOR WITH CANISTER FILTERS

**KC-4045C/KDCF-3500**

- Noise level reading at 36": 75-85 dB
- Static pressure (inch of water): 11.8
- Dust port opening: 3 x 4" / 1 x 8"

**3 HP**  
10 Amp. @ 220V



**\$1699.**

# 3 SPEED AIR CLEANERS

2 stage filtration, one disposable electrostatic 5 microns outer filter and 1 micron inner two pocket filter

## KAC-410

• .9 Amp.

Air capacity  
410 CFM



COMES WITH 3-SPEED REMOTE CONTROL

**\$299.99**

## KAC-1200

• 4.2 Amp. motor

Air suction capacity  
720, 1115, 1290 CFM



COMES WITH 3-SPEED REMOTE CONTROL

**\$479.99**

## KAC-1400

• 3 Amp. motor

Air suction capacity  
950, 1085, 1400 CFM



COMES WITH 3-SPEED REMOTE CONTROL

**\$669.99**

# CYCLONE DUST COLLECTORS & ACCESSORIES

## 1.5 HP CYCLONE DUST COLLECTOR

**KC-8150C**

- Noise level reading at 36": 78 dB
- Static pressure (inch of water): 9.7
- 29 Gallon steel drum with quick release handle and castor wheels for easy disposal
- Complete with 4 locking castor wheels for portability
- Dust port opening: 2 x 4" / 1 x 6"

**988/1320 CFM**

INCLUDED Remote Control



**\$1899.**

## 2 HP CYCLONE DUST COLLECTOR

**KC-8200C**

- Noise level reading at 36": 78 dB
- Static pressure (inch of water): 10.9
- 29 Gallon steel drum with quick release handle and castor wheels for easy disposal
- Complete with 4 locking castor wheels for portability
- Dust port opening: 2 x 4" / 1 x 7"

**1071/1650 CFM**

INCLUDED Remote Control



**\$2499.**

## 3 HP CYCLONE DUST COLLECTOR

**KC-8300C**

- Noise level reading at 36": 79 dB
- Static pressure (inch of water): 11
- 54 Gallon steel drum with quick release handle and castor wheels for easy disposal
- Complete with 4 locking castor wheels for portability
- Dust port opening: 3 x 4" / 1 x 8"

**1942/2900 CFM**

INCLUDED Remote Control



**\$2799.**

## OPTIONAL

6pc. heavy-duty bags kit

**KDCB-82**

(Fits: KC-8150C

KC-8200C)

**\$39.**

**KDCB-83**

(Fits: KC-8300C)

**\$59.**

# CYCLONE SEPARATOR

## KC-2940S

- Cyclonic force removes 99% of dust and wood chips before it reaches your dust collector
- Recommended for 1.5 to 3 HP dust collectors
- Cyclonic action separates heavy debris from the fine particles and directs them into the steel drum
- 6" Inlet with 2 x 4" adaptor
- 7" Outlet with 6" adaptor, and additional 1" to 6" adaptor included
- Drum bag included

Turn your dust collector into a heavy-duty two-stage cyclone dust collection system



**KING INDUSTRIAL**

29 Gallon steel drum



**\$399.99**

**ADJUSTABLE AIR DEFLECTOR**

# COIL ROOFING NAILER KIT

**8245RN**

- 7/8" to 1 3/4" (11 Ga.)
- Comes with 1/4" air inlet, debris shield, safety glasses, oiler, hex. keys and sturdy carrying case

**HOT DEAL!**  
**\$169.99**

## NAILERS & STAPLERS

### 18 GA. X 1" NARROW CROWN STAPLER KIT

**8101S**

- 3/8" to 1" Staple range
- Comes with 1/4" air inlet, oiler, hex. keys, & sturdy carrying case

**\$59.99**

**ADJUSTABLE AIR DEFLECTOR**



### 16 GA. X 2" MEDIUM CROWN STAPLER KIT

**8216S-2**

- 3/4" to 2" Staple range
- Comes with 1/4" air inlet, oiler, hex. keys, & sturdy carrying case

**\$99.99**

**ADJUSTABLE AIR DEFLECTOR**



### 23 GA. X 1 3/8" HEADLESS PIN NAILER KIT

**8223PN**

- 1/2" to 1-3/8" Pin range
- Comes with 1/4" Air inlet, 2 removable non-marring tips, oiler, hex. keys and sturdy carrying case

**\$59.99**

**ADJUSTABLE AIR DEFLECTOR**



### 23 GA. X 2" HEADLESS PIN NAILER KIT

**8251PN**

- 1/2" to 2" Pin nail range
- Comes with 1/4" Air inlet, 2 removable non-marring tips, oiler, hex. keys and sturdy carrying case

**\$119.99**

**ADJUSTABLE AIR DEFLECTOR**



### 18 GA. NAILER/STAPLER KIT

**8210NS**

- 18 Ga. x 1/4" (3/8" to 1 5/8") stapler
- 18 Ga. (3/4" to 2") nailer
- Comes with 1/4" air inlet, oiler, hex. keys and sturdy carrying case

**HOT DEAL!**  
**\$69.99**

**ADJUSTABLE AIR DEFLECTOR**



**2 in 1**

## ARCTIC FLEX

### HYBRID POLYMER INDUSTRIAL AIR HOSES



(-40°C to 65°C)

HYBRID POLYMER INDUSTRIAL AIR HOSES		
K-2514H	25' x 1/4"	\$21.99
K-2538H	25' x 3/8"	\$29.99
K-5014H	50' x 1/4"	\$33.99
K-5038H	50' x 3/8"	\$44.99
K-10014H	100' x 1/4"	\$54.99
K-10038H	100' x 3/8"	\$65.99

**300 PSI MAXIMUM PRESSURE**

### RETRACTABLE AIR HOSE REEL WITH HYBRID POLYMER AIR HOSE



**K-5038FRL**  
50 ft. x 3/8"  
• All-Weather Flexibility (-40°C to 65°C)  
• Comes with wall mounting hardware  
**\$109.99**

### MANUAL AIR HOSE REEL WITH HYBRID POLYMER AIR HOSE



**K-10014FRL**  
100 ft. x 1/4"  
• All-Weather Flexibility (-40°C to 65°C)  
• 360° swivel base  
**\$109.99**

## ARCTIC FLEX

### PREMIUM HYBRID POLYMER GARDEN HOSES



**K-5058GH**  
5/8" x 50 ft.  
**\$45.**

**K-10058GH**  
5/8" x 100 ft.  
**\$77.**

**150 PSI (Working) - 450 PSI (Burst)**  
**EXTREME ALL-WEATHER FLEXIBILITY KINK RESISTANT**

## ULTRA-QUIET OIL-FREE AIR COMPRESSORS



### ULTRA-QUIET OIL-FREE AIR COMPRESSOR

**KC-1410A**

- 1.8 CFM @ 40 PSI, 1.2 CFM @ 90 PSI
- 125 PSI maximum tank pressure

**1 GALLON**

**3/4 HP (PEAK)** (60 Decibels)  
ASME safety valve



**\$225.**

### ULTRA-QUIET OIL-FREE AIR COMPRESSOR

**KC-2020A**

- 3.80 CFM @ 40 PSI, 2.35 CFM @ 90 PSI
- 125 PSI maximum tank pressure

**2 GALLON**

**2 HP (PEAK)** (60 Decibels)  
ASME safety valve



**\$279.99**

### ULTRA-QUIET OIL-FREE AIR COMPRESSOR

**KC-4620A**

- 3.80 CFM @ 40 PSI, 2.35 CFM @ 90 PSI
- 120 PSI maximum tank pressure

**4.6 GALLON (2 X 2.3)**

**2 HP (PEAK)** (60 Decibels)  
ASME safety valve



**\$379.99**

### ULTRA-QUIET OIL-FREE AIR COMPRESSOR

**KC-10020SQ**

- 5.60 CFM @ 40 PSI, 4.40 CFM @ 90 PSI
- 125 PSI maximum tank pressure

**10 GALLON**

**3 HP (PEAK)** (75 Decibels)  
ASME safety valve



**\$499.99**



### 5.5 PEAK HP 20 GALLON AIR COMPRESSOR

**KC-2051H2**

- 150 PSI max pressure
- 7.6 CFM @ 40 PSI
- 6.0 CFM @ 90 PSI

**20 GALLON**

**5.5 HP (PEAK)**  
ASME safety valve



**\$749.**

# 71 PC. AIR TOOL KIT

**8171**

Comes with 1/2" Impact Wrench, 3/8" Ratchet Wrench, Air Hammer and 1/4" Die Grinder

**\$149.99**



# 18 GA. X 2" BRAD NAILER KIT

**8201NL**

- 3/4" to 2" Nail range
- Comes with 1/4" air inlet, oiler, hex. keys, & sturdy carrying case

ADJUSTABLE AIR DEFLECTOR



**NEW & IMPROVED**

**HOT DEAL! \$59.99**

# 2" FLOORING STAPLER/CLEAT NAILER KIT

**8260FSN-2**

- 1" to 2" Staple range
- 1 1/2" to 2" Cleat nail range
- Comes with mallet, 1/4" air inlet, safety glasses, oiler, hex. keys & sturdy carrying case

**2 in 1**



**HOT DEAL! \$199.99**

# TIRE INFLATION GUN WITH PRESSURE GAUGE

**K-1630**



**\$23.99**

# 16 GA. X 2-1/2" BRAD NAILER KIT

**8225NL**

- 3/4" to 2 1/2" Nail range
- Comes with 1/4" air inlet, oiler, hex. keys, & sturdy carrying case



ADJUSTABLE AIR DEFLECTOR

**HOT DEAL! \$99.99**

# CLIPPED HEAD FRAMING NAILER KITS

**8228N**

- Shoots standard 2 3/16" - 3 9/16", 28° - 30° nails

**8234N**

- Shoots standard 2 3/16" - 3 9/16", 34° nails



ADJUSTABLE AIR DEFLECTOR

**\$149.99 ea**

# 5.5 PEAK HP 24 GALLON AIR COMPRESSOR

**KC-3124V2**

- 150 PSI max pressure
- 7.6 CFM @ 40 PSI
- 6.0 CFM @ 90 PSI
- ASME safety valve

2 CYLINDER CAST IRON SINGLE STAGE OIL LUBRICATED PUMP

# STATIONARY 6.5 PEAK HP 60 GALLON AIR COMPRESSOR

**KC-6160V3**

- 150 PSI max pressure
- 13.4 CFM @ 40 PSI
- 11.2 CFM @ 90 PSI
- High efficiency reed valves

2 CYLINDER CAST IRON SINGLE STAGE OIL LUBRICATED PUMP

# HIGH OUTPUT 6.5 PEAK HP 60 GALLON AIR COMPRESSOR

**KC-5160V3**

- 150 PSI max pressure
- 22.6 CFM @ 40 PSI
- 18.5 CFM @ 100 PSI
- High efficiency reed valves

3 CYLINDER CAST IRON SINGLE STAGE OIL LUBRICATED PUMP

# HIGH OUTPUT 7.5 PEAK HP 80 GALLON AIR COMPRESSOR

**KC-7180V3-MS**

- 200 PSI max pressure
- 43 CFM @ 40 PSI
- 28 CFM @ 175 PSI

**NEW & IMPROVED**

High Performance Air Compressor with high output of 28 CFM @ 175 PSI

2 CYLINDER CAST IRON SINGLE STAGE OIL LUBRICATED PUMP

# AIR COMPRESSORS



**\$875.**



**\$1249.**



**\$1799.**



**\$3999.**

COMPRESSOR OIL BOTTLE  
**KW-077**  
(850ml)

**\$9.99**

### 30 PC VARIABLE SPEED OSCILLATING MULTI-TOOL KIT & ACCESSORIES

**8349QR**

Each kit includes a sanding back-up pad with hook and loop backing, 24 sanding papers (60, 80 and 120 grit) with hook and loop backing, 35mm Tru-cut narrow offset saw blade, 52mm rigid offset scraper blade, hex. key, and sturdy carrying case.



**\$69.99**

<b>Tru-Cut carbide pro plunge saw blade</b> KW-4823 <b>\$14.99</b>	<b>Electrical Box Cutter</b> KW-4825 <b>\$19.99</b>	<b>KW-4801</b> <b>\$14.99</b>	<b>KW-4802</b> <b>\$17.99</b>	<b>KW-4803</b> <b>\$17.99</b>
<b>KW-4804</b> <b>\$17.99</b>	<b>KW-4805</b> <b>\$17.99</b>	<b>KW-4806</b> <b>\$17.99</b>	<b>KW-4810</b> <b>\$7.99</b>	<b>KW-4811</b> <b>\$7.99</b>
<b>KW-4812</b> <b>\$7.99</b>	<b>KW-4813</b> <b>\$7.99</b>	<b>KW-4815</b> <b>\$7.99</b>	<b>KW-4816</b> <b>\$7.99</b>	<b>KW-4817</b> <b>\$7.99</b>
<b>KW-4818</b> <b>\$12.99</b>	<b>KW-4819</b> <b>\$7.99</b>	<b>KW-4820</b> <b>\$12.99</b>	<b>KW-4821</b> <b>\$12.99</b>	

### VARIABLE SPEED DRYWALL SANDER

**KC-8379**

- LED light illuminates the work
- Comes with 6 hoop & loop sanding papers (2 x 80, 120, 180 Grit), extension tube, dust hose, 2 vacuum adaptors (1-1/4" & 1-3/8") and adjustment hex. key

**\$329.99**



### 8 GALLON TOOL TRIGGERED WET-DRY VACUUM WITH HEPA FILTER

**KC-8590TV**  
• 10 Amp. motor

**\$439.99**

### PORTABLE VARIABLE SPEED METAL CUTTING BANDSAW

**KC-8377**

- Variable speed dial for 0-420 SFPM
- Comes with standard 44-7/8" x 1/2" x 0.025" 14 TPI metal cutting blade



**\$219.99**

#### OPTIONAL

Miter Stand turns this Bandsaw into a Cut-off Saw  
**SS-8377**



**\$99.99**

BI-METAL BLADES					
Model	Length	Width	TPI	Thickness	Price
<b>KBB-8376-BM-1014</b>	44 7/8"	1/2"	10-14	.020"	<b>\$22.99</b>
<b>KBB-8376-BM-1418</b>	44 7/8"	1/2"	14-18	.020"	<b>\$22.99</b>

### DRYWALL & PANEL LIFT

**KDL-11**

- Hangs drywall in sizes up to 4 ft. x 16 ft. on any ceiling or wall up to 11 ft. high
- Tripod foot brake keeps drywall lift in position during use
- Easy to assemble and disassemble, can be placed in car trunk



**\$229.99**

### WET-DRY VACUUMS

Double filtration system

**8520LP**

- Powerful 3.5 Peak HP motor
- 5 US Gallon (20L)
- Comes complete with 6 ft. x 1-1/4" hose, 2 pc. plastic extension wand, 20L dust bag, cartridge filter, foam filter, reusable filter, 10" floor sweep and crevice tool

**\$79.99**

**8530LPN**

- Powerful 4 Peak HP motor
- 8 US Gallon (30L)
- Comes complete with 6 ft. x 1-1/4" hose, 2 pc. plastic extension wand, 30L dust bag, cartridge filter, foam filter, reusable filter, 10" floor sweep and crevice tool

**\$99.99**

**8540LST**

- Powerful 5 Peak HP motor
- 10 US Gallon (40L)
- Comes complete with 6 ft. x 1-1/4" hose, 2 pc. plastic extension wand, 40L dust bag, cartridge filter, foam filter, reusable filter, 10" floor sweep and crevice tool and crevice tool

**\$179.99**

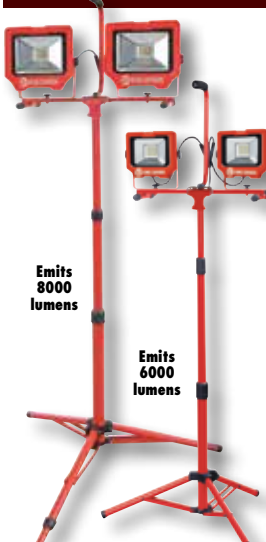
**8560LST**

- Powerful 10.5 Peak HP motor
- 16 US Gallon (60L)
- Convenient 18 ft. power cord
- Comes complete with 8 ft. x 2-1/2" flex hose, 2 pc. 2-1/2" extension wand, handle with air control, cartridge filter, foam filter, 14" floor sweep with squeegee insert, gulper tool, crevice tool and hanging accessory storage bag

**\$299.99**

### LED DUAL-HEAD

### LED WORK LIGHTS



Emits 8000 lumens

Emits 6000 lumens

**KC-1502LED-C**  
10W Work light  
emits 1500 lumens

**\$59.99**

Cordless

**KC-1501LED**  
15W Work light  
emits 1500 lumens

**\$35.99**

**KC-3001LED**  
20W Work light  
emits 3000 lumens

**\$59.99**

**KC-4001LED**  
36W Work light  
emits 4000 lumens

**\$99.99**

**\$219.99** **\$149.99**  
**KC-4002LED-ST** **KC-3002LED-ST**

### 50 FT. 5 LED STRING LIGHT

**K-5016-5LED**

- 50 foot 16 AWG /3 conductor grounded SJT power cord
- 75 linear feet of coverage at 10 feet in height Waterproof to IP44 standards



**\$109.99**

### HEPA CARTRIDGE FILTERS

**KVAC-1145**

FITS: 8520LP, 8530LPN, 8531LP-B, 8540LST

**KVAC-1150** **\$39.**

Fits: 8560LST

### 1/2" DRILLING & MIXING KIT

**KC-8316**

- 9 Amp. motor
- Comes with 1/2" chuck, 3 galvanized mixing paddles (10mm hex. shank), wrench and sturdy carrying case

**\$149.99**

### BISCUIT JOINER KIT

**KC-8306**

- Motor: 7 Amp. 10,800 RPM
- Robust fence with 0 to 90° and 90° to 135° tilt adjustments with positive stops at 45° & 90°
- Kit includes 4" carbide tipped blade, dust bag, hex. key and plastic carrying case

**\$149.99**

### 550 CFM AIR MOVER

**8500AM**

- 3 speed switch
- Comes with two on-board 120V outlets to connect up to 3 Air Movers together for bigger jobs
- 10 ft. power cord for longer reach

**\$75.**



Stackable

# DRILL PRESSES & ACCESSORIES

**DRILL PRESS CHUCK SAFETY GUARD**  
**KM-118**  
Fits KC-118FC  
**\$29.99**

## 17" DRILL PRESS KC-118FC

- 12.5 Amp. motor
- 16 speeds (240-3400 RPM)
- 17" swing
- 3 1/4" stroke
- 5/8" chuck

**\$899.**

## 17" DRILL PRESS with SAFETY GUARD & LIMIT SWITCH KC-118FC-LS

- 12.5 Amp. motor
- 16 speeds (240-3400 RPM)
- 17" swing
- 3 1/4" stroke
- 5/8" chuck

**\$999.**

## 17" LONG STROKE DRILL PRESS with SAFETY GUARD KC-119FC-LS

- Motor: 12.5 Amp. @ 110V, 6.25 amp. @ 220V,
- 12 speeds (255-2750 RPM)
- 16 15/16" swing
- 6" stroke
- 3/4" chuck

**\$1299.**

**LONG STROKE**

**DRILL PRESS CHUCK SAFETY GUARD**  
**KM-122**  
Fits KC-122FC  
**\$29.99**

## 22" DRILL PRESS KC-122FC

- 12.5 Amp. motor
- 1 1/4" capacity
- Spindle taper MT #4
- 12 speeds (180-4200 RPM)
- 4 3/4" stroke
- 3/4" chuck

**\$1299.**

## 22" DRILL PRESS with SAFETY GUARD & LIMIT SWITCH KC-122FC-LS

- 12.5 Amp. motor
- 1 1/4" capacity
- Spindle taper MT #4
- 12 speeds (180-4200 RPM)
- 4 3/4" stroke
- 3/4" chuck

**\$1399.**

## WOOD MORTISING ATTACHMENT MA-511

Kit comes with chisel holder, holddown arms, holddown bracket, fence, ring bushing adaptors, 4 pc. 1/2" shank mortising chisels & bits and carrying case

**\$119.99**

## 15" VARIABLE SPEED INDUSTRIAL DRILL PRESS



Variable speed handwheel with digital readout



Safety guard with limit switch protection



### KC-30HS-VS

- Motor: 14 Amp. @ 115V, 7 Amp. @ 230V
- 5/8" capacity
- Spindle taper JT#3
- Variable speeds (400 - 5,000 RPM)
- 6" stroke
- 5/8" chuck

**\$2999.**

## THE MOST INNOVATIVE DRILL PRESSES

### 16" NOVA VIKING DVR DRILL PRESS

### 18" NOVA VOYAGER DVR DRILL PRESS

DVR WITH ADAPTIVE CONTROL™ SOFTWARE

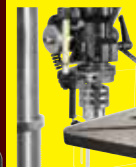
**Safety Guard with Limit Switch**



**83750**  
Fits #83705

**\$399.**

**Safety Guard with Limit Switch**



**58501**  
Fits #58006

**\$399.**

### 83705

- Powerful direct drive 1 HP high torque motor with no pulleys or belts
- Spindle taper MT #2
- Comes with 5/8" drill chuck & key, firmware USB cable

**\$1699.**

### 58006

- Powerful direct drive 1.75 HP high torque motor with no pulleys or belts
- Spindle taper MT #2
- Comes with 5/8" drill chuck & key, firmware USB cable

**\$2399.**

## DRILL PRESS VISES



**KPV-3 KPV-4 KPV-5 KPV-6**  
3" 4" 5" 6"

**\$19.99 \$24.99 \$39.99 \$49.99**

## CROSS SLIDE VISES

Makes lateral or longitudinal adjustments simple



**KCV-4N KCV-5N KCV-6N**  
4" 5" 6"

**\$69.99 \$99.99 \$129.99**

## 8" LOW SPEED BENCH GRINDER

### WITH LIGHT

#### KC-895LS

Comes complete with diamond wheel dressing tool, tool rests, eye shields, coarse 60 grit and fine 120 grit 8" x 1" white aluminum oxide grinding wheels



**\$159.99**

## 8" LOW SPEED LONG SHAFT BUFFER

#### KC-899LSB

• 1/2 HP motor  
• 1,750 RPM  
• Two 8" x 1/2" spiral sewn cloth buffing wheels



**\$159.99**

# Router Table Kits

### ROUTER TABLE KIT

#### XL-200MEP

**\$899.**

#### Kit includes:

- XL-080- Router Table Fence
- XL-049- MDF Table
- XL-114- Phenolic Router Insert Plate
- XL-085- Floor Stand with Switch



XL-080

XL-049

XL-114

XL-085

### DELUXE ROUTER TABLE KIT

#### XL-200C

**\$1999.**

#### Kit includes:

- XL-125- Router Lift
- XL-080- Router Table Fence
- XL-075- Cast-iron Table
- XL-130- Universal Dust Collection Kit
- XL-085- Floor Stand with Switch



XL-125

XL-080

XL-075

XL-130

XL-085



## 16"

#### KXL-16

- 1.3 Amp DC motor
- Variable speed (400-1400 strokes/min)
- Tool free blade change system with blade holders which accept standard 5" pinless blades
- Entire head tilts up to 30° to the left and up to 45° to the right for angled cuts
- Large 12" x 18-1/2" stationary table with built-in 2-1/2" dust chute for dust collector hook-up
- Comes with five 5" pinless blades, replacement blade tension lever kit and adjustment hex. key

**\$849.**

## 21"

#### KXL-21/100

- 1.3 Amp DC motor
- Variable speed (400-1550 strokes/min)
- Tool free blade change system with blade holders which accept standard 5" pinless blades
- Entire head tilts up to 38° to the left and up to 45° to the right for angled cuts
- Large 13-1/2" x 23-1/2" stationary table with built-in 2-1/2" dust chute for dust collector hook-up
- Comes with five 5" pinless blades, foot switch, replacement blade tension lever kit and adjustment hex. key

**\$1149.**

Comes standard with foot switch

## 30"

#### KXL-30/100

- 1.3 Amp DC motor
- Variable speed (400-1550 strokes/min)
- Tool free blade change system with blade holders which accept standard 5" pinless blades
- Entire head tilts up to 38° to the left and up to 45° to the right for angled cuts
- Large 14" x 32-1/2" stationary table with built-in 2-1/2" dust chute for dust collector hook-up
- Comes with five 5" pinless blades, foot switch, replacement blade tension lever kit and adjustment hex. key

**\$1299.**

Comes standard with foot switch

# PROFESSIONAL SCROLL SAWS



Built-in dust blower system



Built-in dust blower system



Built-in dust blower system

### OPTIONAL

#### Pedal Switch

#### XL-100



**\$59.99**

### OPTIONAL

#### STAND

#### KSS-16XL

For Models: KXL-16 & KXL-21/100



**\$129.**

### OPTIONAL

#### STAND

#### KSS-30XL

For Model: KXL-30/100

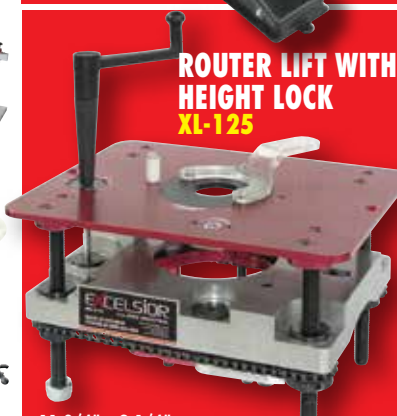


**\$129.**

We reserve the right to limit quantities. We reserve the right to correct any typographical and pictorial errors without notice. Articles may vary from illustration shown. Some retailers may not stock all products due to space restrictions and product availability.

### ROUTER LIFT WITH HEIGHT LOCK

#### XL-125



11-3/4" x 9-1/4" anodized aluminum top plate

**\$599.99**

### ROUTER REDUCER COLLARS



XL-314 3-1/4"

**\$49.99**



XL-312 3-1/2"

**\$49.99**

### 4 PC. INSERT RING KITS



Zero Clearance

XL-074

**\$99.99**



(1/4", 1/2", 1-3/8", 2-1/2")

XL-076

**\$99.99**

### PHENOLIC ROUTER INSERT PLATE

#### XL-114

11-3/4" x 9-1/4"



**\$99.99**